



English Indoor Bowling Association Limited

David Cornwell House, Bowling Green,
Leicester Road, Melton Mowbray, Leics LE13 0FA
telephone: 01664 481 900 fax: 01664 482 888

Email: enquiries@eiba.co.uk Website: www.eiba.co.uk

RULES AND REGULATIONS GOVERNING THE USE AND REGISTRATION OF COLOURED SHIRTS

1. Coloured Shirts, may be worn in any event controlled by the English Indoor Bowling Association Limited (EIBA Ltd) providing that EIBA Ltd has given prior consent and approval of the design of the shirt to be worn. Applications for the design of a coloured shirt, including registration fee, shall be made to EIBA Ltd on the appropriate form. Once the design has been approved a Registration Certificate will be issued.
2. Following this procedure, a Shirt in the registered colours may be worn by an individual, team or side in any event under the direct control of EIBA Ltd provided that the Club at which the tie is to be played permits the wearing of coloured shirts. In a team or sides event if coloured shirts are to be worn the same registered shirt must be worn by ALL members of the team or side. In mixed events where men and ladies have different registered coloured shirts, all men should wear the same shirt design and all ladies should wear the same shirt design.
3. Where individual Club Rules prohibit the wearing of coloured shirts the Club Rules shall supersede these Regulations.
4. The wearing of a Coloured Shirt, which has not been approved may result in elimination from further participation in that event. In very exceptional circumstances players arriving at Championship Finals in non-registered shirts will be given an application form to immediately temporarily register their shirts and will be allowed to compete and play in the event providing the appropriate registration fee is paid.
5. **Design**
 - ✚ Shirts shall have a collar and may have long or short sleeves. The shirt design may include as many colours as required and a maximum of 4 commercial logos including a shirt manufacturer's logo may be placed on the shirt design.
 - ✚ **Shirt Front** – can include
 - 1 commercial logo not exceeding 12.5cm x 12.5cm
 - 1 commercial logo not exceeding 30cm x 10cm
 - 1 club/county badge not exceeding 12.5cm x 12.5cm
 - ✚ **Shirt Back** – can include
 - A Club/County name or Sponsor not exceeding 25cm long x 7cm high.
 - ✚ **Shirt Sleeve** – can include
 - A Sponsors logo on either the right or left sleeve not exceeding 12.5cm x 10cm
 - ✚ **Personal Sponsor** - A Personal Sponsors logo to be placed on either shirt sleeve (size as above) may be submitted by a player to his Club or County for approval by EIBA Ltd. When approved this shirt may only be used by the player in Singles Competitions unless all his team members have the same Personal Sponsor and Registered Shirt design. A Personal Sponsor's logo can be attached to a club/county shirt where space permits i.e. within the allocated specification of a maximum of 4 commercial logos including a shirt manufacturer's logo.
6. Once a design has been approved and registered, no changes will be permitted without further approval from EIBA Ltd. A Club or County can register many alternative designs but they must be on separate forms with sufficient payment.



English Indoor Bowling Association Limited

David Cornwell House, Bowling Green,
Leicester Road, Melton Mowbray, Leics LE13 0FA
telephone: 01664 481 900 fax: 01664 482 888

Email: enquiries@eiba.co.uk Website: www.eiba.co.uk

From: (Secretary) of Indoor Bowls Club/County I.B.A.*
Men's / Ladies (delete as appropriate)

Address where the certificate to be sent

I wish to apply for approval of the design of the shirt to be worn by players of above Club/County Association* in games under the control of the English Indoor Bowling Association Ltd.

Our Club/County Association colours are :

The shirt base colour will be:

The secondary colours will be:

The secondary colours will be used for :
(e.g. Cuffs, Collar, Sleeves etc.)

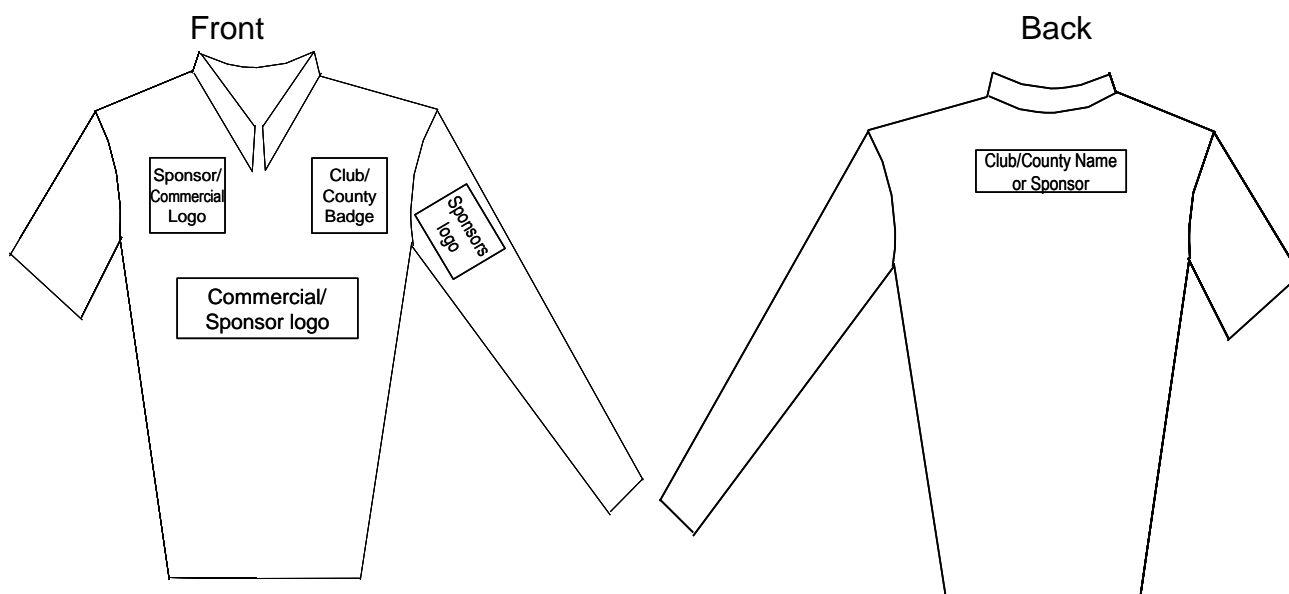
I enclose samples of the colour(s) that will be used for the shirt and the sketch below shows how the shirt will look. I also enclose copies of the Club/County* badge and the Sponsors advertising material at the size they are to be used. (* Delete as appropriate)

I understand that the Shirt may not be used in any event under the control of EIBA Ltd before confirmation of it's approval by EIBA Ltd. Once the design has been registered and a certificate issued no changes will be made to the design without written permission from EIBA Ltd.

I enclose the registration fee of £10.00 inclusive of VAT.
Cheques payable to EIBA Ltd

Signed: Date:

Please indicate on the sketch where alternative colours will be used and enclose samples of the proposed colours for reference. Long or short sleeves may be acceptable. Please indicate the proposed positioning of any logo, wording, or badge.



25.08.17